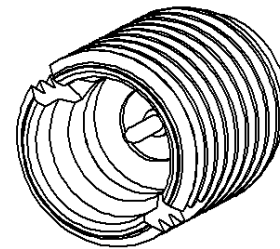
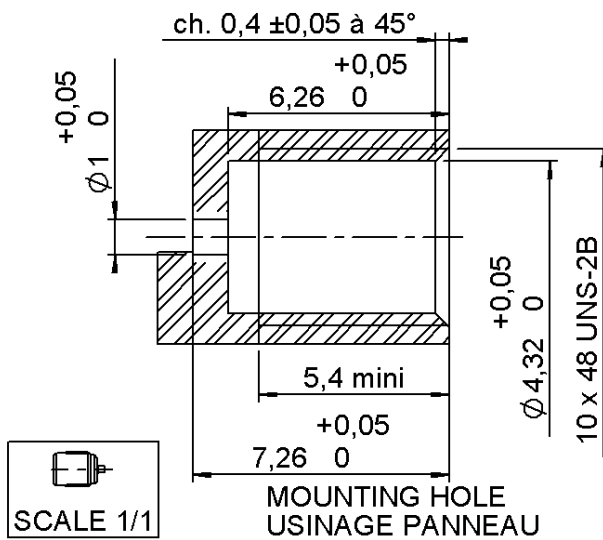
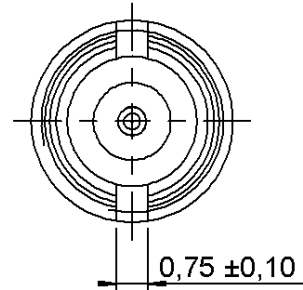
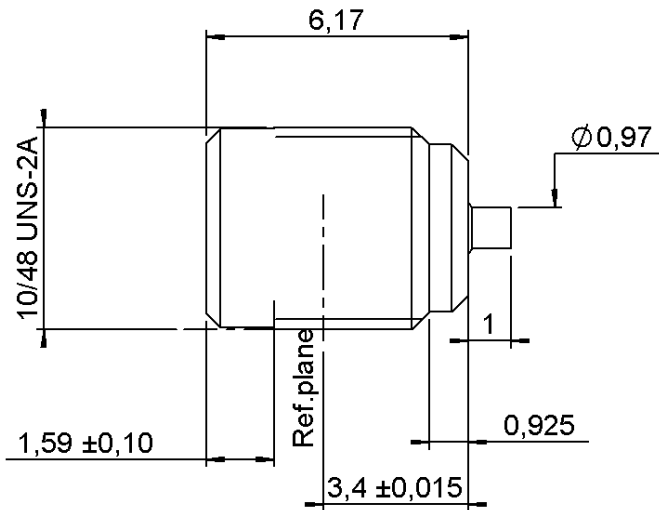


SCREW-ON PLUG RECEPTACLE

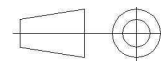
R222.561.331

LIMITED DETENT

Series : SMP



All dimensions are in mm.



COMPONENTS	MATERIALS	PLATINGS (µm)
BODY	STAINLESS STEEL	PASSIVATED
CENTER CONTACT	BERYLLIUM COPPER	GOLD 1.27 OVER NICKEL 1.27
OUTER CONTACT	-	-
INSULATOR	PTFE	-
GASKET	-	-
OTHERS PARTS	-	-
-	-	-
-	-	-

Issue : 0741 C

In the effort to improve our products, we reserve the right to make changes judged to be necessary.



SCREW-ON PLUG RECEPTACLE

R222.561.331

LIMITED DETENT

Series : SMP

PACKAGING

SPECIFICATION

Standard	Unit	Other
100	'W' option	Contact us

ELECTRICAL CHARACTERISTICS

ENVIRONMENTAL

Impedance	50	Ω
Frequency	0-40	GHz
VSWR	1.3 + 0,0000	x F(GHz) Maxi
Insertion loss	0.1	\sqrt{F} (GHz) dB Maxi
RF leakage	- (65*	- F(GHz)) dB Maxi
Voltage rating	335	Veff Maxi
Dielectric withstanding voltage	500	Veff mini
Insulation resistance	5000	M Ω mini

Operating temperature	-65/+165	$^{\circ}$ C
Hermetic seal	NA	Atm.cm3/s
Panel leakage	NA	

OTHERS CHARACTERISTICS

Assembly instruction **NA**

Others :

*3 at 26 GHz

CONFORME MIL-STD348A NOTICE3 FIG326-3

MECHANICAL CHARACTERISTICS

Center contact retention		
Axial force – Mating end	6.68	N mini
Axial force – Opposite end	6.68	N mini
Torque	NA	N.cm mini

Recommended torque		
Mating	NA	N.cm
Panel nut	90	N.cm

Mating life	500	Cycles mini
Weight	0,5400	g

* Electrical characteristics are guaranted with
 R280.473.100
 or R280.473.110
 or R280.473.120

Issue : 0741 C

In the effort to improve our products, we reserve the right to make changes judged to be necessary.



SCREW-ON PLUG RECEPTACLE**R222.561.331****LIMITED DETENT**

Series : SMP

**ADDITIONAL INFORMATIONS
MOUNTING AND REPLACEMENT INSTRUCTIONS**

1 - INFORMATIONS

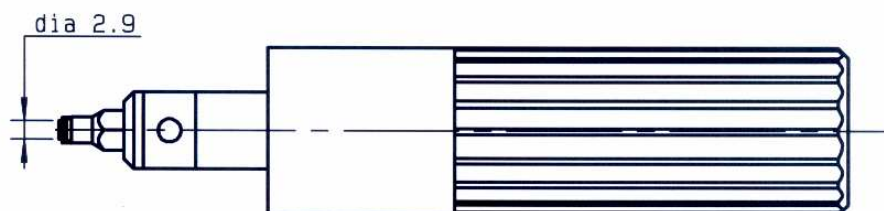
Centre contact temperature stoking do not exceeded 250 degrees celsius - (soldering 180 degrees celsius) .

2 - MOUNTING AND REPLACEMENT

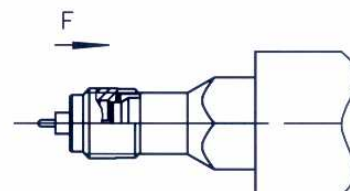
Connector must be screwed or unscrewed with adapted torque driver R282.339.002 .

(recommended coupling torque 90 Ncm) .

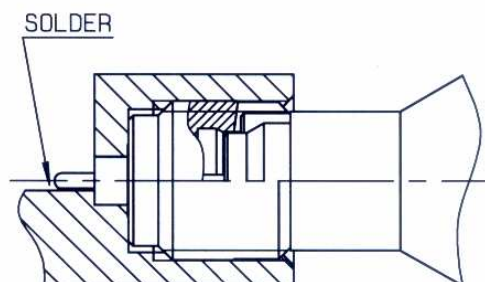
Adapted tooling only: R282.360.002 .



2-1 - Slide on connector in F direction until it bottoms against tooling .



2-2 - Screw the whole into the housing until activation torque driver . (torque 90 Ncm)



2-3 - To withdraw tooling .
Solder centre contact .

Issue : 0741 C

In the effort to improve our products, we reserve the right to make changes judged to be necessary.

